

# SuiteDocs™

## SuiteViews™

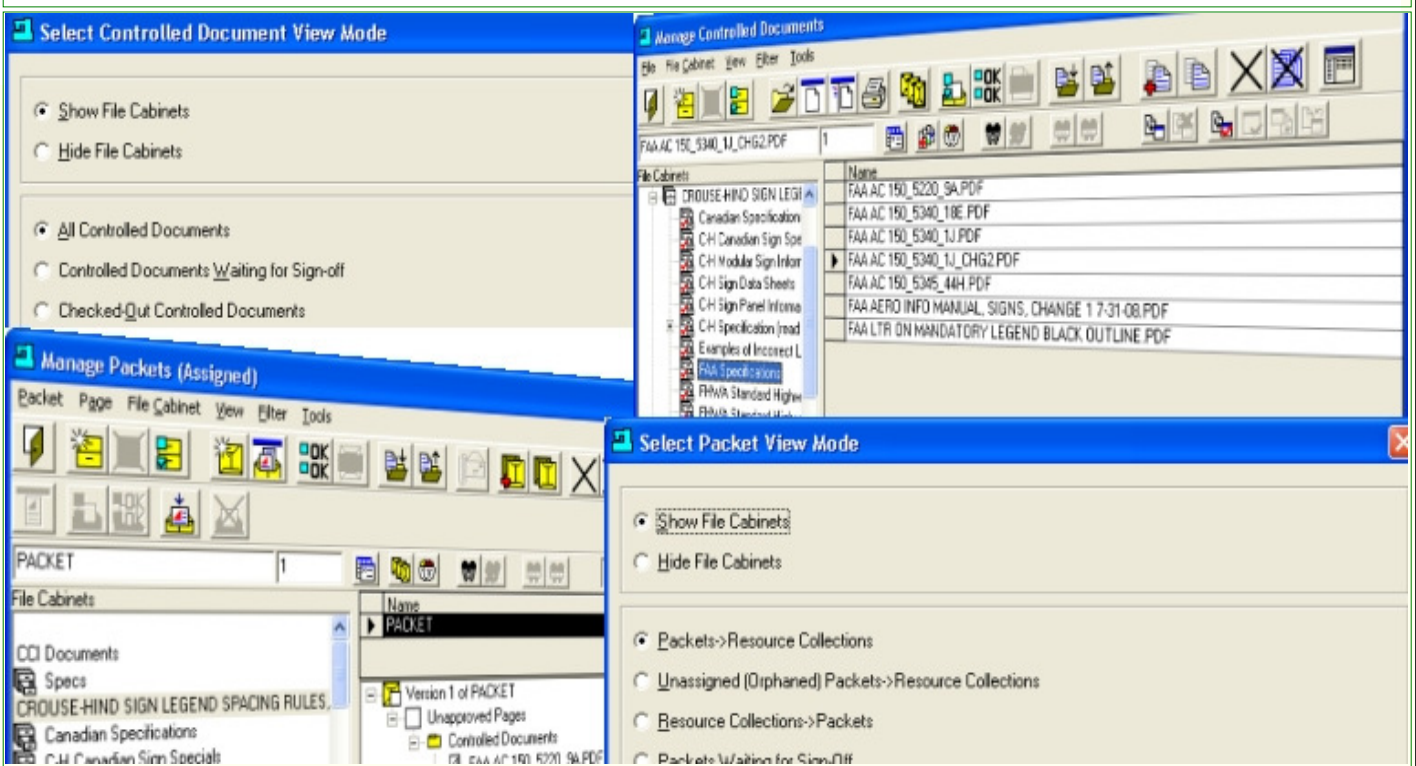
**SuiteViews™ Provides 32 Plus Different Data Relationship Views  
A SuiteDocs™ Support Module for Viewing All of Your Data Relationships  
For Windows 7™/Windows XP™ including Terminal Server Support**

**You have Files, Documents and Packets. These are in various States such as: Approved, Unapproved, Checked-Out, Assigned, Unassigned or possibly in containers such as Packets. (See SuitePacs™)**

**You may want to view the Data Relationships from a purely File or Document View or perhaps from within SuiteViews™ View! Are the Files/Documents/Packet waiting to be signed off?**

**SuiteViews™ to the rescue!**

## SuiteViews™ an Integrated Support Module



### Standard:

### SuiteViews™ Basics

#### SuiteViews™ Basics Include:

- Show File Cabinets
- Hide File Cabinets

#### Packets

- Packets to Resource Collections
- Unassigned (Orphaned) Packets to Resource Collections
- Resource Collections to Packets
- Packets Waiting for Sign-off
- Assigned (To Resource Collection)
- Unassigned (Orphaned)
- Show Approved Packets
- Show Approval States of Packets (Unlimited)
- Show Unapproved Packets

#### Documents

- Show All Documents
- Controlled Documents Waiting for Sign-off
- Checked-Out Controlled Documents
- Show Approved Documents
- Show Approval States of Documents (Unlimited)
- Show Unapproved Documents

<p><b>SuiteFileCabinet™ View</b></p>	<p>Use this "View" when you only want to view Documents &amp; Packets contained within a Virtual File Cabinet, Draw, Folder or Sub-Folder.</p> <p><b>Note:</b> SuiteFileCabinet™. allows you to securely store &amp; manage Files, Documents and Packets in it's "Virtual File Cabinet(s)".</p>
<p><b>SuiteViews™</b></p> <p><b>For</b></p> <p><b>Documents</b></p>	<p>SuiteViews™ provides 12 Plus different ways for you to view how "Virtual File Cabinets", Files and Documents are related to various Entities within SuiteDocs™</p> <p>Following is a list of the various Relationships:</p> <ul style="list-style-type: none"> <li>• All Controlled Documents</li> <li>• Controlled Documents Waiting for Sign-off</li> <li>• Checked-Out Controlled Documents</li> </ul> <p><b>Note:</b> This Relationship Setting is Independent of any other View and multiplies your Relationship Views by six times!</p>
<p><b>SuiteViews™</b></p> <p><b>For</b></p> <p><b>Packets</b></p>	<p>SuiteViews™ provides 32 Plus different ways for you to view how "Virtual File Cabinets", Files, Documents and Packets are related to various Entities within SuiteDocs™</p> <p>Following is a list of the various Relationships:</p> <ul style="list-style-type: none"> <li>• Packets to Resource Collections</li> <li>• Unassigned (Orphaned) Packets to Resource Collections</li> <li>• Resource Collections to Packets</li> <li>• Packets Waiting for Sign-off</li> </ul> <p><b>Note:</b> This Relationship Setting is Independent of any other View and multiplies your Relationship Views by six times!</p>
<p><b>Assigned &amp; Unassigned Views</b></p>	<p>SuiteDocs™ provides "Views" of Assigned or Unassigned Packets to Resource Collections. Users associated to these Resource Collections can then access Packets Assigned to these Resource Collections.</p> <p>Select the SuiteViews™ icon and select the Assigned or Unassigned View!</p>
<p><b>Approved &amp; Unapproved Views</b></p>	<p>SuiteDocs™ provides "Views" to display Approved or Unapproved Files, Documents and or Packets. Generally a Normal User can only access approved Files, Documents and or Packets.</p> <p>Select the SuiteViews™ icon and select the Approved or Unapproved View!</p>
<p style="text-align: center;"><b>For more information call, Fax, email or visit our SuiteDocs Web site:</b>  <b>CAD/CAM Integration, Inc.</b>  <b>76 Winn Street Woburn, MA 01801</b>  <b>Tel: 781-933-9500 Fax: 781-933-9238</b>  <a href="mailto:sales@suitedocs.com">Email:sales@suitedocs.com</a>  <a href="http://www.suitedocs.com">SuiteDocs Web:www.suitedocs.com</a></p>	