

SuiteDocs™

SuiteTracker™

An ISO9000 Document Control Management Module

Record & Track All Changes to your Files: office, engineering, manufacturing, legal . .

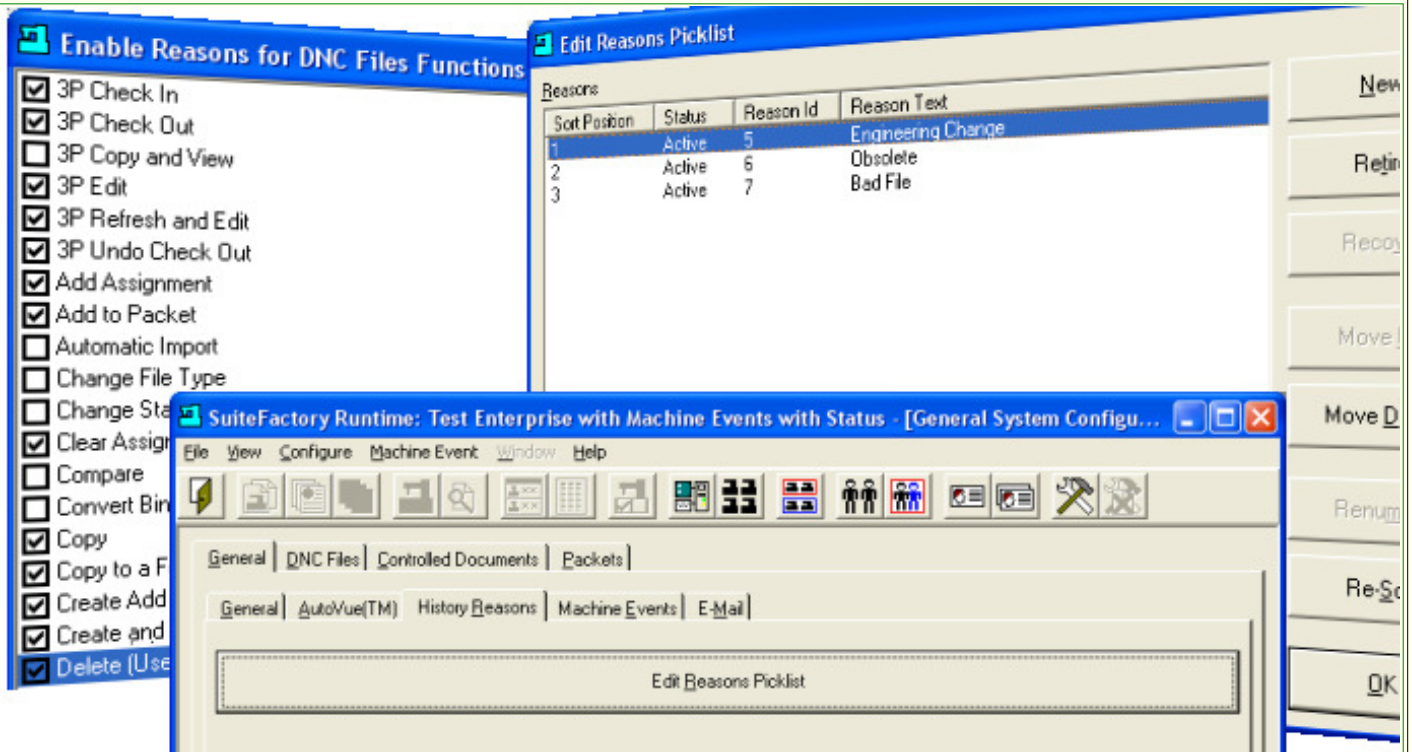
A SuiteDocs™ Module

For Windows™ XP/Vista including Terminal Server Support

SuiteTracker™ is a SuiteDocs™ Module that has over 40 Events that can be configured to capture almost any change to your Documents that require ISO9000 Documentation. If you're truly maintaining ISO9000 Traceability you are required to Capture & Record the Who, What, When, Where and Whys of all changes to any File and or Document.

SuiteTracker™ not only provides these capabilities but also provides the ability to create any number of customer "Event Reasons" for these Events. You can then use SuiteTracker™ to Associate particular Event Reasons with a Particular Event. Now couple this with the ability of select only the Events you want to activate & capture and you have complete control over your ISO9000 Documentation Requirements!

SuiteTracker™ an Integrated ISO9000 Traceability Module



Features:

SuiteTracker™ Basics

SuiteTracker's™ Basics Include:

- Activate Event Capture (Up to 44 Events)
- Create & Edit Event Reasons Pick List (Unlimited)
- Associate Event Reason(s) for selected Event(s)
- Store Captured Events/Reasons in SuiteDocs™ History Database
- Generate Standard & Customer Reports with SuiteReports™

Activate Document & Packet Event Capture

SuiteTracker™ Captures:

- **Document Events**
 - Add Event: Packet
 - Copy Event: Copy; Copy to Folder; Copy to File Cabinet
 - Delete Event: Delete/Archive
 - Edit Event: Approval & Signoff; File Type Extension; Search Criteria
 - Import Event: Automatic, Manual, Packet Automatic, Packet Manual
 - Move Event: Move
 - Print Event: Print
 - Remove Event: Packet
 - Rename Event: Rename
 - Sign Off Event: Sign Off
 - 3rd-Party Event: Check In/Out; Copy & View; Edit; Refresh & Edit; Undo Checkout
- **Packet Events**

	<ul style="list-style-type: none"> ○ Add Event: Assignment; Child Packet; Page ○ Clear Event: Assignment ○ Copy Event: Copy; File Cabinet ○ Create Event: Create ○ Delete Event: Delete ○ Edit Event: Approval & Signoff; Page Open; Search Criteria; UCF Display Name ○ Export Event: Export ○ Import Event: Automatic, Manual ○ Move Event: Move ○ Remove Event: Page; Child Packet ○ Rename Event: Rename ○ Sign Off Event: Sign Off
--	---

<p>Create Event Capture Reasons</p>	<p>SuiteTracker™ Allows a User To Create:</p> <ul style="list-style-type: none"> ● Document Event Reasons(Customer Creatable Examples) <ul style="list-style-type: none"> ○ Archive Due to Engineering Change Notice ○ Copy Document(Make new Document) ○ Copy Document to Folder(Copy Doc from SuiteDocs™ to Folder) ○ Move to File Cabinet ○ Sign Off Document(Approve Doc for Production) ● Packet Event Reasons(Customer Creatable Examples) <ul style="list-style-type: none"> ○ Archive Due to Engineering Change Notice ○ Rename Packet ○ Export Packet(Copies Documents from SuiteDocs to Folder Maintaining Structure) ○ Move to File Cabinet ○ Sign Off Packet(Approve Packet Structure) <p>Note: Use SuiteTracker™ to create any number of "Event Reason(s)" that have meanings to, as an example, your company's ISO9000 Quality System.</p> <p>An ISO9000 Quality System requires that whenever someone Edits, Deletes, Moves, Renames, Approves, etc. a particular File or Document that a record should be maintained of this Event. Create your own meaningful "Event Reason(s)" with SuiteTracker™ and when you are ready to generate ISO9000 Reports, your Reports will have meaningful Reasons for Changes!</p>
--	--

<p>Associate An Event With Selected Event Reasons</p>	<p>SuiteTracker™ Allows a User To Associate:</p> <ul style="list-style-type: none"> ● Document Events with Created Event Reasons <ul style="list-style-type: none"> ○ Delete Event: "Archive Due to Engineering Change Notice" ○ Copy Event: "Copy Document" ○ Copy to Folder Event: "Copy Document to Folder" ● Packet Events with Created Event Reasons <ul style="list-style-type: none"> ○ Delete Event: "Archive Due to Engineering Change Notice" ○ Rename Event: "Rename Packet" ○ Create Packet Event: "Create New Manufacturing Operation"
--	--

<p>SuiteReports™</p>	<p>Use SuiteReports™ with SuiteFilters™ To:</p> <ul style="list-style-type: none"> ● Generate Reports for System Configuration ● Generate Customer Configurable Reports for Controlled Documents ● Generate Customer Configurable Reports for Packets <p>Note: You have used SuiteTracker™ to record all of your Events in Suite Docs'™ ISO9000 Compliant Database. Now use SuiteReports™ to Generate the Who's, When's, Where's and Why's of all Events/Documents/Packets!</p>
-----------------------------	--

For more information call, Fax, email or visit our web site:
CAD/CAM Integration, Inc.
76 Winn Street Woburn, MA 01801
Tel: 781-933-9500 Fax: 781-933-9238
[Email:sales@suitedocs.com](mailto:sales@suitedocs.com)
[Web:www.suitedocs.com](http://www.suitedocs.com)