

# SuiteDocs™

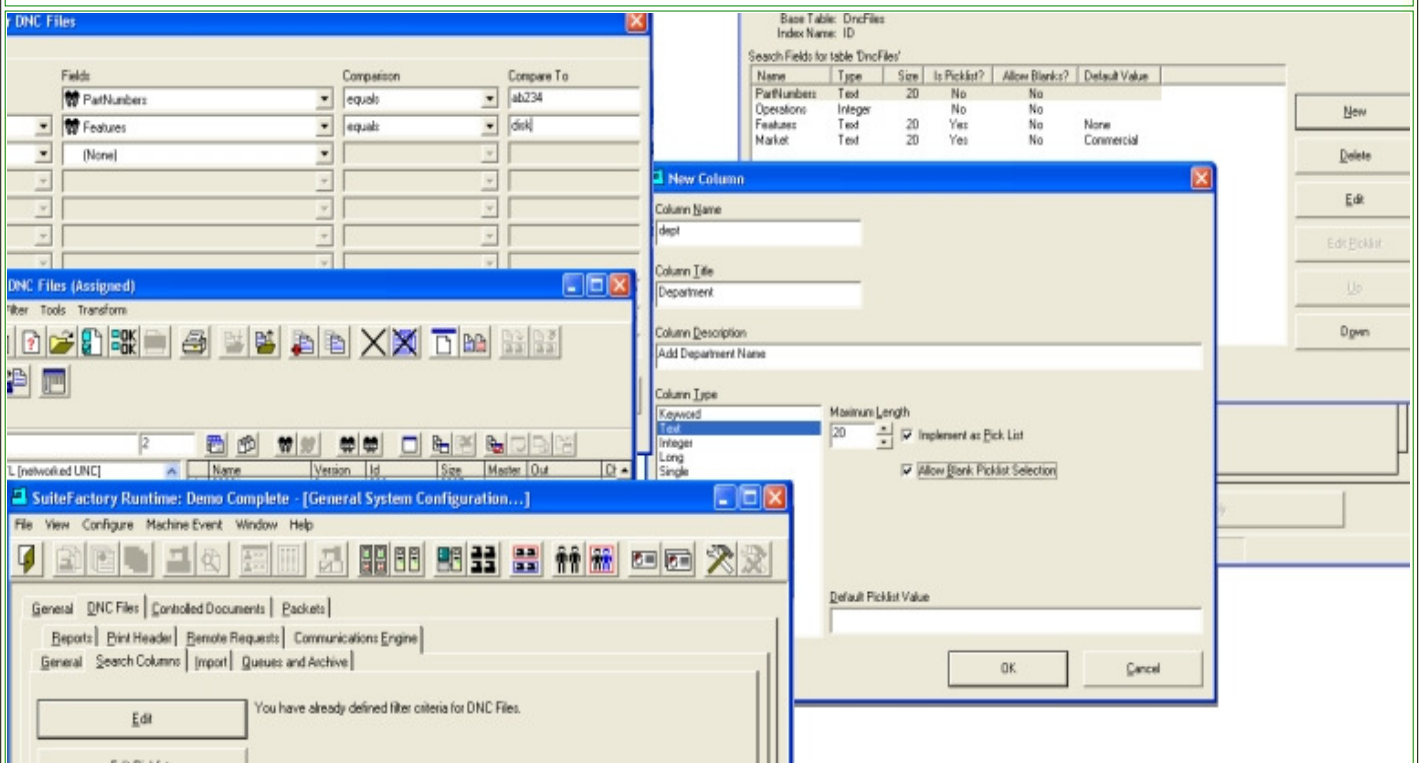
## SuiteSearch™

Find any Document, File or Packet using Your Company's Meta Data  
 A Database-Driven, Meta Data Field Creator & Meta Data Search Engine  
 A SuiteDocs™ Module  
 For Windows 7™/Windows XP™ including Terminal Server Support

SuiteSearch™ is a Composite Module consisting of a sophisticated Search Engine which is used to Interrogate SuiteDocs' database for the data that is stored the Customer Created Search Fields locating any and all Files, Documents or Packets that match the Customer's Input Search Criteria.

The located Files/Documents/Packets can then be selected to perform any function that is allowed for this Individual User subject to their User Group Rights. I.e. Editing, Deleting, Copying, Exporting, View, etc.

## SuiteSearch™ A Full Featured Meta Data Field Creation & Search Engine Module



### Features:

#### SuiteSearch™ Basics

#### SuiteSearch's™ Basics Include:

- Creating nine Different File & Document Meta Data Fields
- Creating nine Different Packet Meta Data Fields
- Searching for Files, Documents or Packets using Meta Data as Search Criteria
- Searching for Files, Documents or Packets using Standard Properties as Search Criteria
- Searching for Files, Documents or Packets using Both Meta Data & Standard Properties
- Narrow File, Document or Packet selections using multiple Search Criteria

#### Create SuiteFiles™ Meta Data Fields

#### SuiteSearch™ Allows a User To:

- Create any number of File & Document Meta Data Fields
  - Key Field
  - Text Field
  - Integer Field
  - Single Field
  - Long Field
  - Double Field
  - Date Field
  - Boolean Field
  - Note Field
- Search for Documents using up to 10 Different Criteria Simultaneously

#### Create SuitePacs™

#### SuiteSearch™ Allows a User To:

- Create any number of Packet Meta Data Fields
  - Key Field
  - Text Field
  - Integer Field

|  |  |
|--|--|
| <p><b>Meta Data Fields</b></p>   | <ul style="list-style-type: none"> <li>○ Single Field</li> <li>○ Long Field</li> <li>○ Double Field</li> <li>○ Date Field</li> <li>○ Boolean Field</li> <li>○ Note Field</li> </ul> <ul style="list-style-type: none"> <li>● Search for Packets using up to 10 Different Criteria Simultaneously</li> </ul>  |
| <p><b>Create<br/>Pick Lists<br/>For Meta Data Fields</b></p>   | <p><b>SuiteSearch™ Allows a User To:</b></p> <ul style="list-style-type: none"> <li>● Create any number of Picklist Meta Data Fields for the Following Type: <ul style="list-style-type: none"> <li>○ Text Field</li> <li>○ Integer Field</li> <li>○ Single Field</li> <li>○ Long Field</li> <li>○ Double Field</li> <li>○ Date Field</li> </ul> </li> <li>● Search for Pick list Meta Data using up to 10 Different Criteria Simultaneously</li> </ul>  |
| <p><b>SuiteSearchEngine™</b></p>   | <p>The Search Engine can be quickly configured to search for any Files, Documents and or Packets based on their Properties and or Meta Data defined by the customer. The Search is defined by using built in boolean conditions to narrow the search range.</p> <p>There can be up to 10 criteria used at the same time to locate the needed files and documents. The Search Engine can use the following criteria for its searches: standard file properties, key words, dates, integers, text, pick-list, etc.</p> |
| <p style="text-align: center;"> <b>For more information call, Fax, email or visit our web site:</b><br/> <b>CAD/CAM Integration, Inc.</b><br/> <b>76 Winn Street Woburn, MA 01801</b><br/> <b>Tel: 781-933-9500 Fax: 781-933-9238</b><br/> <a href="mailto:sales@suitedocs.com">Email:sales@suitedocs.com</a><br/> <a href="http://www.suitedocs.com">Web:www.suitedocs.com</a> </p> |  |