

SuiteDocs™

SuitePacs™

Document Management Module

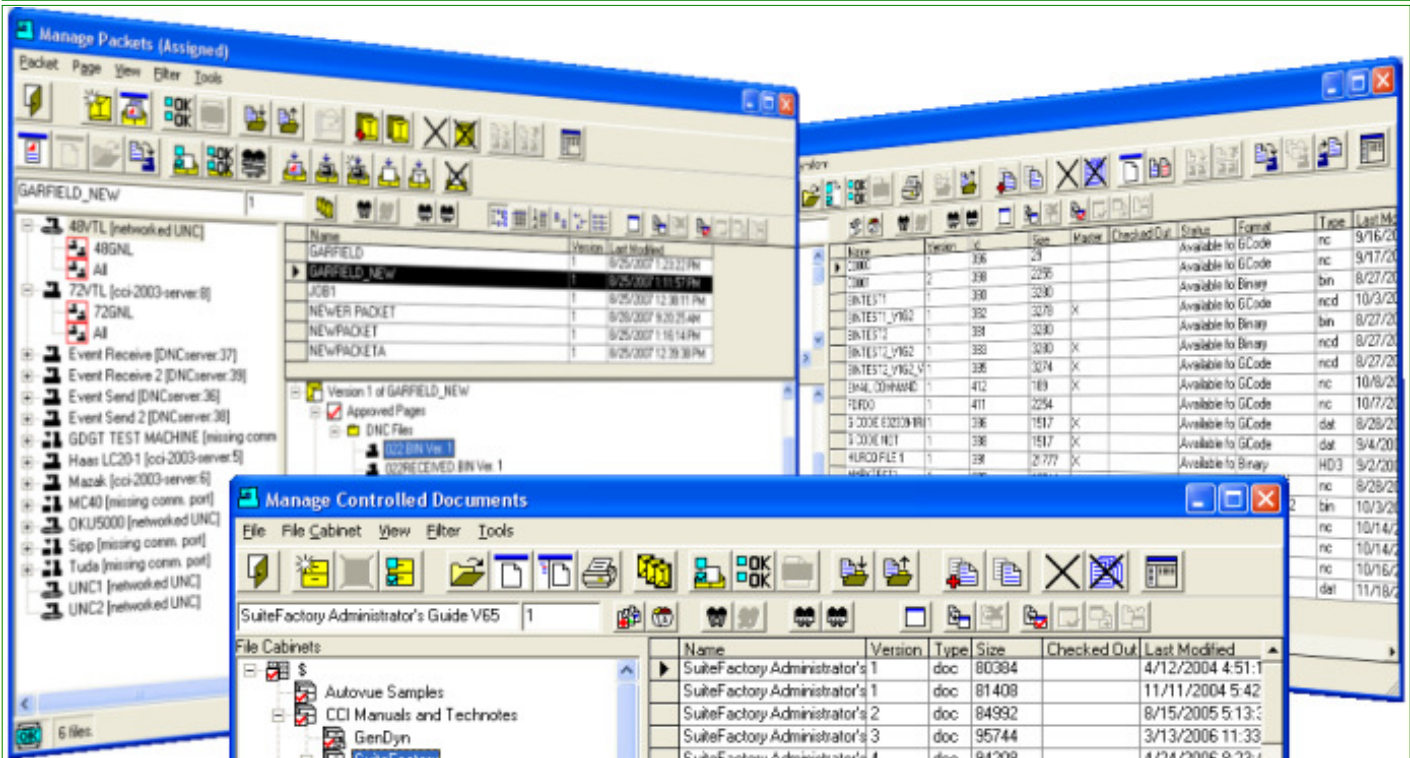
A Full-Featured, Database-Driven, Simple Document Control System

A SuiteFactory™ Application

For Windows 7™/Windows XP™ including Terminal Server Support

SuitePacs™ is a database-driven module that gives you the ability to associate files for specific tasks, projects, manufacturing operations or retrieval of any set of related items. When a packet is created it becomes a controlled item whose use is governed and monitored the same way as for a individual files and or documents.

SuitePacs™ An Integrated Secure Management Module



Standard:

SuiteDocs™ User Login Security

Provide your Company with Secure User Logins:

- Administrators controls who can access any item and to what extent.
- Administrators can Create any number of Users
- Administrators can Create User Groups with different Rights Limiting User's Access
- Administrators controls over 100 Rights

SuitePacs Basics

SuitePacs™ Basics Include:

- SuiteFileCabinets™
- SuiteFiles™
- SuiteSearch™
- SuiteEMail™
- SuiteCitrix™
- SuiteErrorLog™
- Ability to Manually Import any Packet with Files Into SuiteDocs's™ Secure Database
- Ability to Automatically Import any Packet with Files Into SuiteDocs'™ Secure Database
- Ability to View any Packet's Files with a Native or Optional AutoVue Viewer

SuiteFiles™

SuiteFiles™ Allows you To:

- Manually Import any Files Into SuiteDocs'™ Secure Database
- Automatically Import any File(s) Into SuiteDocs'™ Secure Database
- Export any File from SuiteDocs'™ Secure Database to and External Folder
- View any File with a Native or Optional AutoVue Viewer

SuiteFileCabinets™

SuiteFileCabinets™ is an Organization Tool so you Can:

- Create a Controllable Hierarchy using "Virtual File Cabinets"
- Create as many Secure "Virtual File Cabinets" as needed

	<ul style="list-style-type: none"> • Create as many Secure: "Draws", "Folders" & "Sub-Folders" as your needs require • Drag & Drop in your N/C Files, Documents & Packets into "Virtual File Cabinets" • Automatically Import your N/C Files, Documents & Packets into "Virtual File Cabinets" • Click on any N/C File, Document or Packet in the "Virtual File Cabinet" for an Instant View(s)
--	---

SuiteSearch™	<p>SuiteSearch™ allows Creation of Meta Data Fields so you Can:</p> <ul style="list-style-type: none"> • Create and Populate Keyword Fields • Create and Populate Text Fields • Create and Populate Pick-List Fields • Create and Populate Date Fields • Create and Populate Boolean Fields • Create and Populate Note Fields • Use SuiteSearchEngine to Locate any Files, Documents or Packets <p>Note: The SuiteSearchEngine can be quickly configured to search for any Files or Packets using the Meta Data Defined and Populated by you.</p>
---------------------	--

SuiteEMail™	<p>SuiteEMail™ Allows Users To:</p> <ul style="list-style-type: none"> • Email Packets to User (Converts to Folder Structure) • Email Packets to Distribution Group (Converts to Folder Structure)
--------------------	---

SuiteCitrix™	<p>SuitePacs™ directly supports Citrix so You Can:</p> <ul style="list-style-type: none"> • Load SuitePacs™ on a Few Servers Deploy to Many Clients • Access SuitePacs™ Securely Internet Wide • Reduce Cost of Ownership since SuitePacs™ is Citrix Compliant • Access SuitePacs™ using PCs, Smart Phones, Blackberries, et.
---------------------	--

SuiteErrorLog™	<p>SuiteErrorLog™ No Finger Pointing since SuiteErrorLog™ Captures:</p> <ul style="list-style-type: none"> • Software Bugs • Hardware Problems • Network Problems • The what, where and when <p>Note: SuiteErrorLog™ Knows What, Where & When it Happened and Intercepts, Records and Notifies you of all Errors.</p>
-----------------------	---

Options & Upgrades:

SuitePacs™ Options:	<p>SuitePacs™ Options</p> <ul style="list-style-type: none"> • Additional Packet Sessions (SuitePacs Access from additional Workstation) • Additional Workstations (General Access for Shop, Engineering, Administration, etc.) • Additional User Groups (Provide User Rights for Secure Access to SuitePacs) • Additional Resource Collections (Hold Files, Packets)
----------------------------	--

SuitePacs™ Upgrades:	<p>SuitePacs™ Upgrades</p> <ul style="list-style-type: none"> • SuiteHistory: History Logging & Reporting • SuiteCharts™: Real-Time Intelligent Interactive Charting • SuiteLanguage™: Managing Menus, Managing/Creating new Languages
-----------------------------	--

For more information call, Fax, email or visit our web site:
CAD/CAM Integration, Inc.
76 Winn Street Woburn, MA 01801
Tel: 781-933-9500 Fax: 781-933-9238
[Email:sales@suitedocs.com](mailto:sales@suitedocs.com)
[Web:www.suitedocs.com](http://www.suitedocs.com)